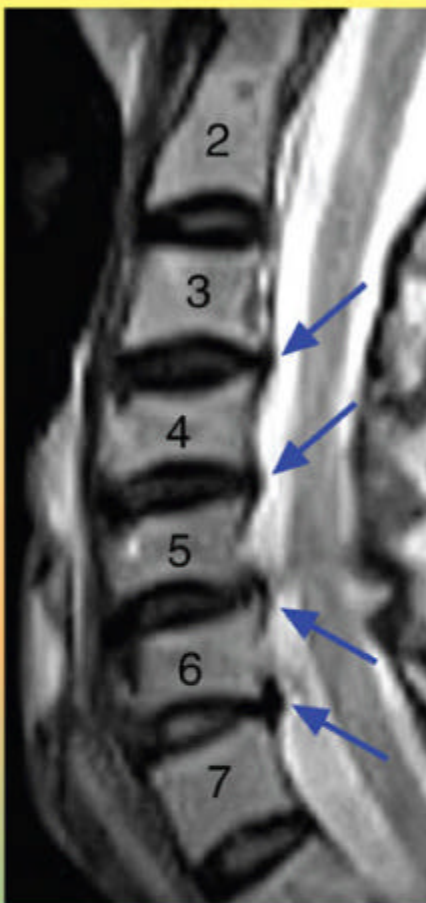


Neurosurgeon Gets Striking Pre/Post MRI Results With Posture Pump®

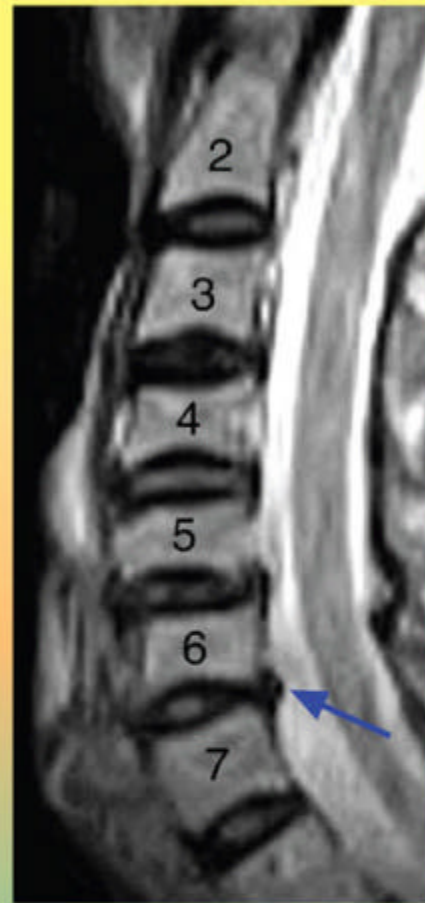
A major IRB approved clinical study performed by world-renowned neurosurgeon and researcher Dr. C. Norman Shealy was completed in July 2006. The Study's final round had 34 patients with damaged cervical spines each receiving a pre and post-cervical MRI. Between the two diagnostic procedures each patient underwent a 20-minute session of **Expanding Ellipsoidal Decompression (EED™)**. EED™ is a corrective decompressive technique commonly prescribed for patients with painful neck and back pain stiffness. Many of these patients exhibit loss of normal spinal curves and aberrant joint alignment. EED™ was applied to the cervical concavity of each subject via **Posture Pump®**.

The findings of decrease annulus bulging (disc resorption/hydration) and anterior subarachnoid space clearing from only one **20-minute session** appear stunning. Since most practitioners utilizing EED™ technology are experienced in pre/post x-ray studies, geometric shape and alignment change are commonly sought. **Indications that disc resorption and subarachnoid space clearing can occur under EED™ even when there is minimal curve change were huge bonuses.** Expansion and contraction of the machine's air cells milked the discs while sustained inflation periods decompressed and shaped lordotic curves. Dr. Shealy stated, **"MRI changes were often dramatic-with improvement in cervical curve, widening of disc spaces and often apparent shrinkage of what appear to be disc bulges, which I would have thought are physically permanent. I have no financial interest in the Posture Pump company. However, this approach appears to be the simplest, safest and most inexpensive approach I have seen to date for treating chronic neck pain."**



Pre MRI (Patient # C20)

Note bulges/protrusions into the anterior subarachnoid space at C3/4, C4/5, C5/6 and C6/7 (at arrows). Compare these bulges to the 20-minute post MRI.



Post MRI after 20 min Tx (Patient # C20)

Bulges/protrusions at C3/4 and C4/5 are no longer visible. The stair stepping at C5/6 is reduced while the C6/7 bulge is still prominent after one 20-minute session of **Expanding Ellipsoidal Decompression (EED™) via Posture Pump®**. (See arrow and compare with arrows on pre MRI)

Please Note: It is nearly impossible to obtain the exact same tissue slice on a Pre versus Post MRI, especially if the shape of the object has changed. Therefore Pre/Post MRI comparisons are not perfect and are subject to interpretation. It is estimated that over one half million people have utilized EED™ technology via Posture Pump®.



The workhorse for lordotic recovery in over 500,000 cases.

Nothing works like Expanding Ellipsoidal Decompression (EED™). Don't wait until it's too late for your patients! Help them get the results they deserve now. How can you do less?

To view Pre/Post MRI's, x-rays and to receive updated research information as it becomes available visit our website or email us at: sales@posturepump.com

www.posturepump.com

714-847-8607 • 800-NECK PRO (632-5776)

Posture Pro, Inc., 18584 Main Street, Huntington Beach, CA 92648