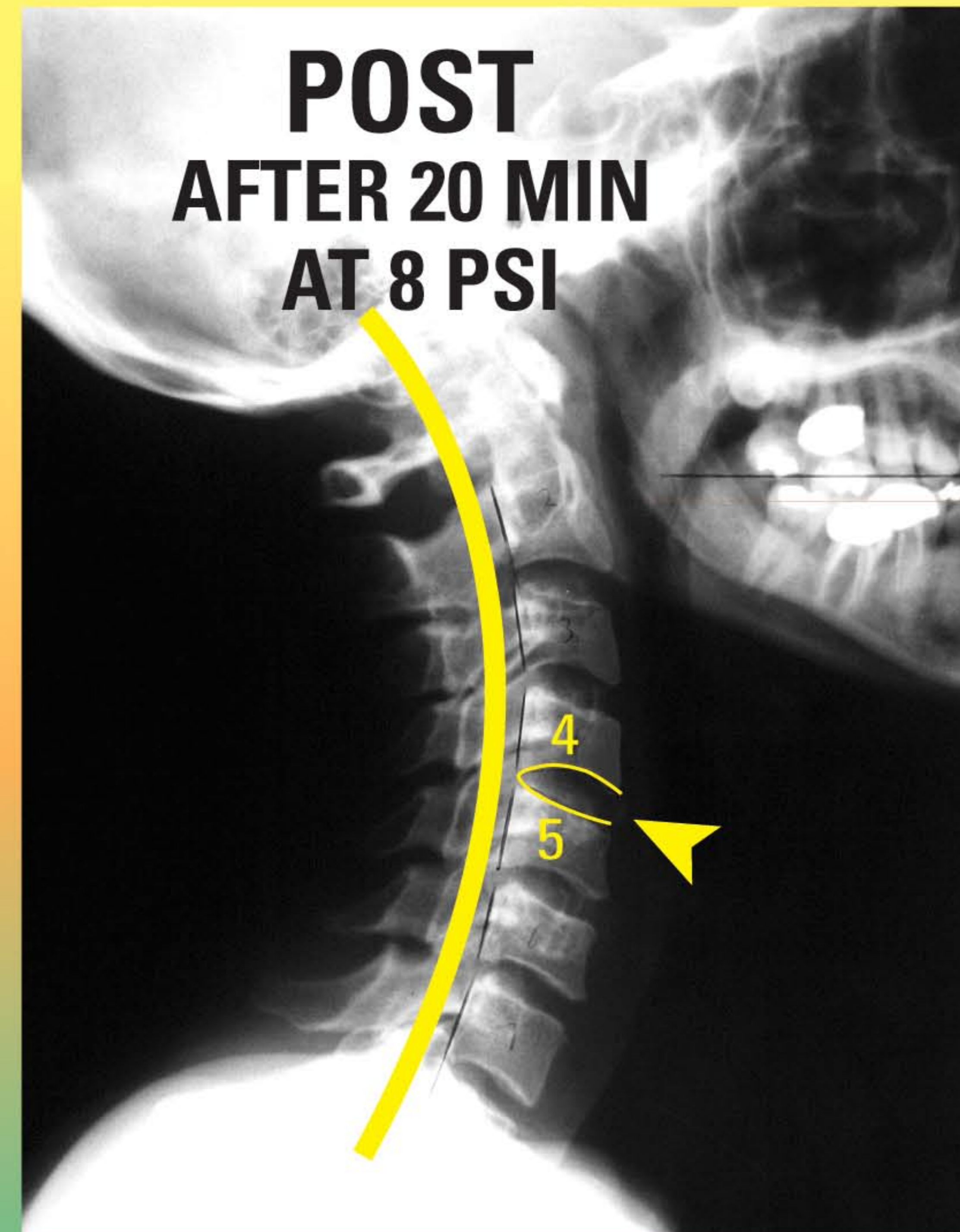
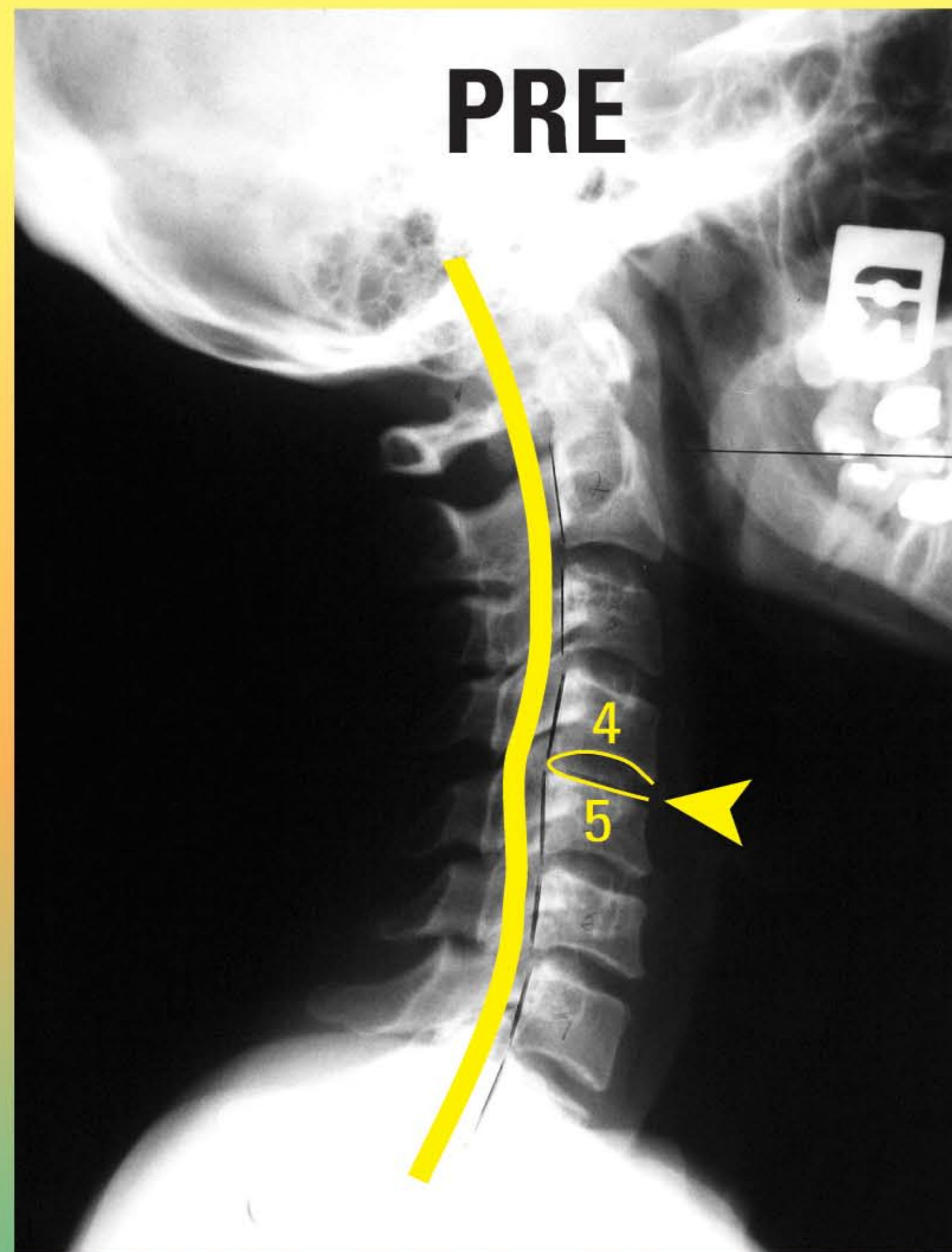


20 Minutes Can Save a Neck.

This Post X-Ray was obtained after *one 20-minute session* of **Expanded Ellipsoidal Decompression (EED™)** applied from **within the lordotic concavity** by the **Posture Pump® Cervical Spine Trainer.®**

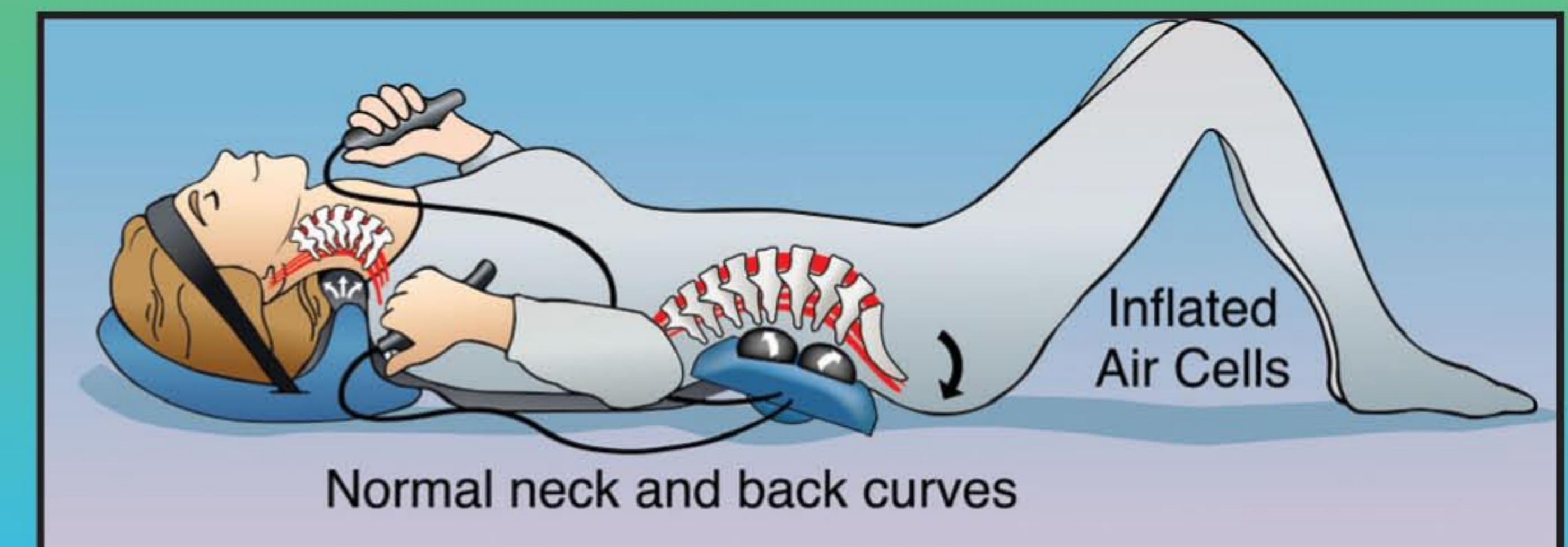
Kyphotic Buckle

Ms. P with kyphotic buckle at C-4/C-5. Note posterior position of C-4 and C-5 as they compress the anterior disc space (outlined). This aberrant configuration is a breeding ground for joint decay that will surely follow without correction.



Ms. P after *only* one 20min session of **Expanded Ellipsoidal Decompression (EED™)** applied from within the lordotic concavity at 8 PSI. Note that the kyphotic buckle is gone! Also observe the C-4/C-5 disc space (outlined). It has expanded or hydrated approximately 50%. Wow! If this patient will stick with Posture Pump® her dramatic reversal of kyphosis will lead to lasting lordotic recovery.

Rolled up towels, hot packs, cold packs, massage, medication, vibration, foam blocks, linear traction, vitamins, neck braces or exercise alone **won't do the trick**. But as proven above, **Expanded Ellipsoidal Decompression (EED)™** applied from within the lordotic concavity, **can, will and does!**



Call 1-800-NECK PRO (632-5776)
for free brochure and support data

sales@posturepump.com to receive updated pre/post x-rays
www.posturepump.com